

L TIMING PULLEYS

0.375" Trapezoidal Pitch

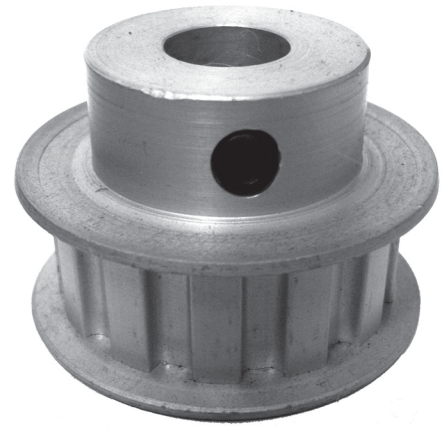
For 1" Wide Belts

Hub and Flanges

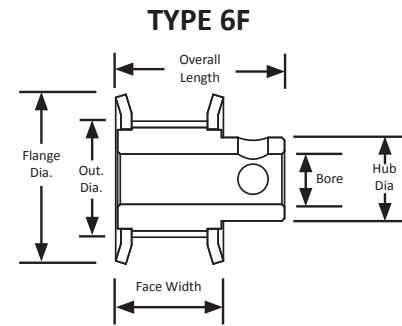
Aluminum

Clear Anodized

Finished Bore

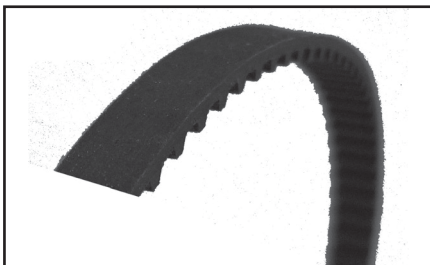


Part Number	No. of Teeth	Type	Pitch Dia. (in)	Out. Dia. (in)	Flange Dia. (in)	Bore (in)	Face Width (in)	Overall Length (in)	Hub Dia. (in)	Set Screw
13L100-6FA5	13	6F	1.552	1.522	1.781	0.375	1.250	1.750	1.125	2 x 10-32 @ 90°
14L100-6FA5	14	6F	1.671	1.641	1.906	0.375	1.250	1.750	1.125	2 x 10-32 @ 90°
15L100-6FA5	15	6F	1.790	1.760	2.031	0.375	1.250	1.750	1.375	2 x 1/4-20 @ 90°
15L100-6FA6	15	6F	1.790	1.760	2.031	0.500	1.250	1.750	1.375	2 x 1/4-20 @ 90°
16L100-6FA6	16	6F	1.910	1.880	2.125	0.500	1.250	1.750	1.375	2 x 1/4-20 @ 90°
17L100-6FA6	17	6F	2.029	1.999	2.250	0.500	1.250	1.750	1.500	2 x 1/4-20 @ 90°
18L100-6FA6	18	6F	2.149	2.119	2.375	0.500	1.250	1.750	1.625	2 x 1/4-20 @ 90°
19L100-6FA6	19	6F	2.268	2.238	2.500	0.500	1.250	1.750	1.687	2 x 1/4-20 @ 90°
20L100-6FA6	20	6F	2.387	2.357	2.625	0.500	1.250	1.750	1.812	2 x 1/4-20 @ 90°
21L100-6FA6	21	6F	2.507	2.477	2.750	0.500	1.250	1.750	2.000	2 x 1/4-20 @ 90°
22L100-6FA6	22	6F	2.626	2.596	2.875	0.500	1.250	1.750	2.125	2 x 1/4-20 @ 90°
24L100-6FA6	24	6F	2.865	2.835	3.094	0.500	1.250	1.750	2.250	2 x 1/4-20 @ 90°
26L100-6FA6	26	6F	3.104	3.074	3.330	0.500	1.250	1.750	2.438	2 x 1/4-20 @ 90°
28L100-6FA6	28	6F	3.342	3.312	3.566	0.500	1.250	1.750	2.688	2 x 1/4-20 @ 90°
30L100-6FA6	30	6F	3.581	3.551	3.800	0.500	1.250	1.750	2.813	2 x 1/4-20 @ 90°
32L100-6FA6	32	6F	3.820	3.790	4.044	0.500	1.250	1.750	3.125	2 x 1/4-20 @ 90°
36L100-6FA6	36	6F	4.297	4.267	4.520	0.500	1.250	1.750	3.500	2 x 1/4-20 @ 90°
40L100-6FA6	40	6F	4.775	4.745	5.000	0.500	1.250	1.750	3.625	2 x 1/4-20 @ 90°

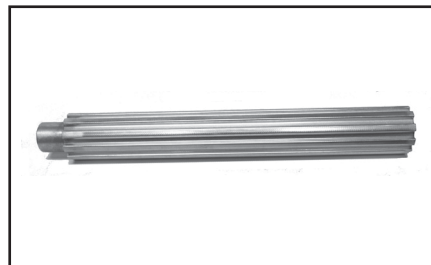


The L pitch is an imperial pitch which is based on the "inch" system of measurement. The imperial pitch tooth profile is a commonly found profile and is trapezoidal in shape. Imperial pitch pulley part numbers can tell you a great deal about the pulley including the number of teeth, pitch, belt width, unit of measure, appearance, material, and bore size.

For more information on part numbers and their meaning, see page 441.



For matching L pitch belts, see page 194.



For L pitch pulley stock and flanges, see page 264.